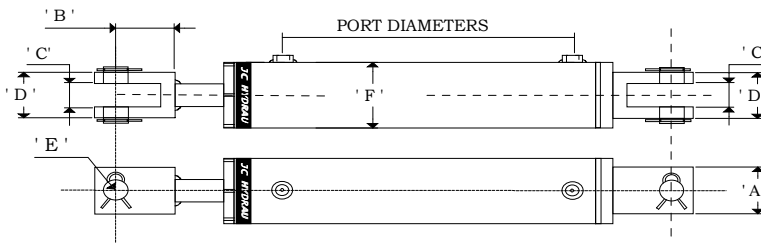




MPA SERIES Multi-Purpose Agricultural Cylinders

Features

- Hardened chrome plated rod
- Heavy duty welded rear clevis construction
- Precision honed heavy wall hydraulic tube
- Forged cast steel clevises
- Ductile iron gland and piston
- Threaded gland head, buttress to accept higher pressure capacities
- 2500PSI operating pressure
- Double acting
- Stocked in imperial sizes



Dimensions							
Bore Size	A	B	C	D	E	F	Ports(NPT)
2 -50.8	2.125 -53.975	2.125 -53.975	1.125 -28.575	2.07 -52.578	1 -25.4	2.5 -63.5	3/8
2.5 -63.5	2.125 -53.975	2.125 -53.975	1.125 -28.575	2.07 -52.578	1 -25.4	3 -76.2	1/2
3 -76.2	2.125 -53.975	2.125 -53.975	1.125 -28.575	2.07 -52.578	1 -25.4	3.5 -88.9	1/2
3.5 -88.9	2.125 -53.975	2.125 -53.975	1.125 -28.575	2.07 -52.578	1 -25.4	4 -101.6	1/2
4 -101.6	2 -50.8	2 -50.8	1.125 -28.575	2.07 -52.578	1 -25.4	4.5 -114.3	1/2
5 -127	2 -50.8	2 -50.8	1.5 -38.1	2.44 -61.976	1 -25.4	5.5 -139.7	1/2



MPA SERIES: Multi-Purpose Agricultural Cylinders

Model		Weight kgs	Rod Dia.	Bore Size	Port Type	Centers closed "	Centers Open "	Stroke inch	Price
MPA	20 4	5.8	1-1/4"	2	3/8NPT	14.25	18.25	4	\$270.00
MPA	20 6	6.6				16.25	22.25	6	\$296.50
MPA	20 8	7.4				20.25	28.25	8	\$310.00
MPA	20 10	8.1				20.25	30.25	10	\$325.50
MPA	20 12	8.8				22.25	34.25	12	\$337.00
MPA	20 14	9.6				24.25	38.25	14	\$352.10
MPA	20 16	10.4				26.25	42.25	16	\$370.00
MPA	20 18	11.1				28.25	46.25	18	\$391.50
MPA	20 20	11.9				30.25	50.25	20	\$402.00
MPA	20 24	13.4				34.25	58.25	24	\$443.00
MPA	20 28	14.9				38.25	66.25	28	\$447.50
MPA	20 30	15.7				40.25	70.25	30	\$488.00
MPA	20 32	16.4				42.25	74.25	32	\$516.00
MPA	20 34	17.2				44.25	78.25	34	\$527.00
MPA	20 36	18	46.25	82.25	36	\$536.00			
MPA	25 4	7.7	1-1/2"	2.5	1/2NPT	14.25	18.25	4	\$293.00
MPA	25 6	8.7				16.25	22.25	6	\$297.00
MPA	25 8	9.7				20.25	28.25	8	\$307.50
MPA	25 10	10.6				20.25	30.25	10	\$324.50
MPA	25 12	11.6				22.25	34.25	12	\$333.50
MPA	25 14	12.6				24.25	38.25	14	\$353.00
MPA	25 16	13.5				26.25	42.25	16	\$391.50
MPA	25 18	14.5				28.25	46.25	18	\$392.00
MPA	25 20	15.5				30.25	50.25	20	\$417.80
MPA	25 24	17.4				34.25	58.25	24	\$427.00
MPA	25 28	19.3				38.25	66.25	28	\$464.75
MPA	25 30	20.3				40.25	70.25	30	\$512.00
MPA	25 32	21.3				42.25	74.25	32	\$587.50
MPA	25 34	22.2				44.25	78.25	34	\$596.00
MPA	25 36	23.2	46.25	82.25	36	\$605.00			



MPA SERIES: Multi-Purpose Agricultural Cylinders

Model	Weight kgs	Rod Dia.	Bore Size	Port Type	Centers closed "	Centers Open "	Stroke inch	Price
MPA 304	9.9	1-1/2"	3	1/2NPT	14.25	18.25	4	\$ 343.00
MPA 306	11				16.25	22.25	6	\$ 358.00
MPA 308	12.2				20.25	28.25	8	\$ 364.00
MPA 3010	13.2				20.25	30.25	10	\$ 385.00
MPA 3012	14.3				22.25	34.25	12	\$ 397.00
MPA 3014	15.4				24.25	38.25	14	\$ 427.50
MPA 3016	16.6				26.25	42.25	16	\$ 443.00
MPA 3018	17.7				28.25	46.25	18	\$ 457.00
MPA 3020	18.8				30.25	50.25	20	\$ 478.50
MPA 3024	21				34.25	58.25	24	\$ 527.00
MPA 3028	23.2				38.25	66.25	28	\$ 577.00
MPA 3030	24.3				40.25	70.25	30	\$ 597.00
MPA 3032	25.5				42.25	74.25	32	\$ 626.50
MPA 3034	26.6				44.25	78.25	34	\$ 647.00
MPA 3036	27.7				46.25	82.25	36	\$ 655.00
MPA 354	11.9	1-3/4"	3.5	1/2NPT	14.25	18.25	4	\$385.00
MPA 356	13.3				16.25	22.25	6	\$402.00
MPA 358	14.7				20.25	28.25	8	\$442.00
MPA 3510	16.1				20.25	30.25	10	\$488.00
MPA 3512	17.5				22.25	34.25	12	\$511.00
MPA 3514	18.9				24.25	38.25	14	\$531.00
MPA 3516	20.3				26.25	42.25	16	\$580.50
MPA 3518	21.8				28.25	46.25	18	\$610.00
MPA 3520	23.2				30.25	50.25	20	\$638.50
MPA 3524	26				34.25	58.25	24	\$682.00
MPA 3528	28.8				38.25	66.25	28	\$732.00
MPA 3530	30.2				40.25	70.25	30	\$741.00
MPA 3532	31.7				42.25	74.25	32	\$771.00
MPA 3534	33.1				44.25	78.25	34	\$793.23
MPA 3536	34.5				46.25	82.25	36	\$823.00



MPA SERIES: Multi-Purpose Agricultural Cylinders

Model		Weight kgs	Rod Dia.	Bore Size	Port Type	Centers closed "	Centers Open "	Stroke inch	Price
MPA	40 4	13.9	2"	4"	1/2NPT	14.25	18.25	4	\$491.00
MPA	40 6	15.6				16.25	22.25	6	\$526.00
MPA	40 8	17.8				20.25	28.25	8	\$540.00
MPA	40 10	19.1				20.25	30.25	10	\$588.00
MPA	40 12	20.9				22.25	34.25	12	\$619.00
MPA	40 14	22.7				24.25	38.25	14	\$661.50
MPA	40 16	24.4				26.25	42.25	16	\$682.50
MPA	40 18	26.2				28.25	46.25	18	\$705.00
MPA	40 20	27.9				30.25	50.25	20	\$731.50
MPA	40 24	31.5				34.25	58.25	24	\$814.50
MPA	40 28	35				38.25	66.25	28	\$857.00
MPA	40 30	36.8				40.25	70.25	30	\$881.00
MPA	40 32	38.5				42.25	74.25	32	\$922.00
MPA	40 34	40.3				44.25	78.25	34	\$950.00
MPA	40 36	42				46.25	82.25	36	\$977.00
MPA	50 4	29	2-1/2"	5	1/2NPT	16.25	20.25	4	\$ 789.00
MPA	50 6	31				18.25	24.25	6	\$ 798.00
MPA	50 8	33				20.25	28.25	8	\$ 814.00
MPA	50 10	35				22.25	32.25	10	\$ 844.00
MPA	50 12	37				24.25	36.25	12	\$ 895.00
MPA	50 14	39				26.25	40.25	14	\$ 956.00
MPA	50 16	41				28.25	44.25	16	\$1,004.00
MPA	50 18	43				30.25	48.25	18	\$1,052.50
MPA	50 20	45				32.25	52.25	20	\$1,180.00
MPA	50 24	49				36.25	60.25	24	\$1,216.00
MPA	50 28	53				40.25	68.25	28	\$1,264.00
MPA	50 30	55				42.25	72.25	30	\$1,308.00
MPA	50 32	57				44.25	76.25	32	\$1,402.00
MPA	50 34	59				46.25	80.25	34	\$1,436.00
MPA	50 36	61				48.25	84.25	36	\$1,469.00